

Manage Your Work with iPhora® AppPlace

Presented by Richard Moy
Managing Director – Phora Group

NCUG Webinar: Real Life Solutions with Domino
November 23, 2021



- What is Work?
- iPhora AppPlace
- iPhora AppBuilder
- Summary

- We talk with others to resolve issues and explore ideas
- We participate in meetings
- We perform business functions
- We share information
- We participate in business processes

Benefits of cloud services

- Speed of implementation
- Scalability
- API availability for integration
- Continuous Improvements

Benefits of private solutions

- Control of your data
- Data privacy

How do you harness the power of cloud services while maintaining control of your data and privacy?

iPhora solutions combine the best of cloud-based services with your private applications to meet the needs of your business while ensuring the security and privacy of your data.

- iPhora AppPlace
- iPhora AppBuilder
- iPhora Process Automation

- Internal data is managed within your private cloud/on-premises environment
- Isolates each cloud service, acting as middle layer between your users and the service
- When possible, iPhora obfuscates user identify when interacting with cloud services.
- Built-in features to ensure compliance with data privacy regulations
- Security by Simplicity

- iPhora AppPlace provides **places** where you can collaborate, share ideas, and process information.
- A **place** is where you chat, have private meetings, share files, process documents, or run applications.
- **Places** can have **channels**
- **Place** users can be internal and/or external
- **Places** can be tailored to match your needs

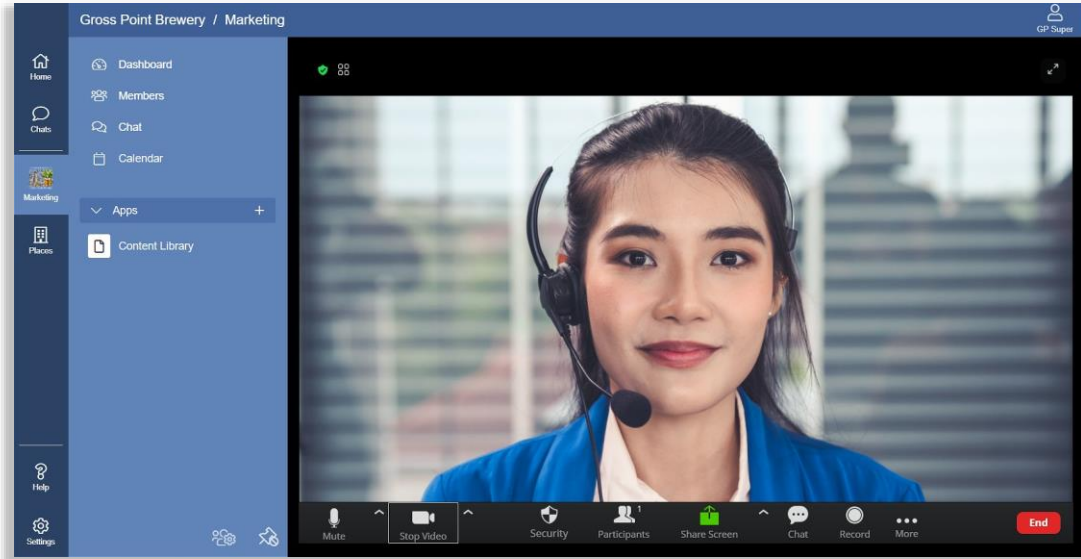


Add tools to do your work

- Chat apps
- Meeting apps
- Content library
- Cloud-based apps
- Custom internal applications
- Etc



- Agnostic platform - utilizes services of your choice
- API and web services driven
- Binds different cloud services and internal environment
- Common interface (UI and API) for user and administrator
- Administrator-based user management



iPhora AppPlace

iPhora
Middle Layer Service

Sametime

Jitsi

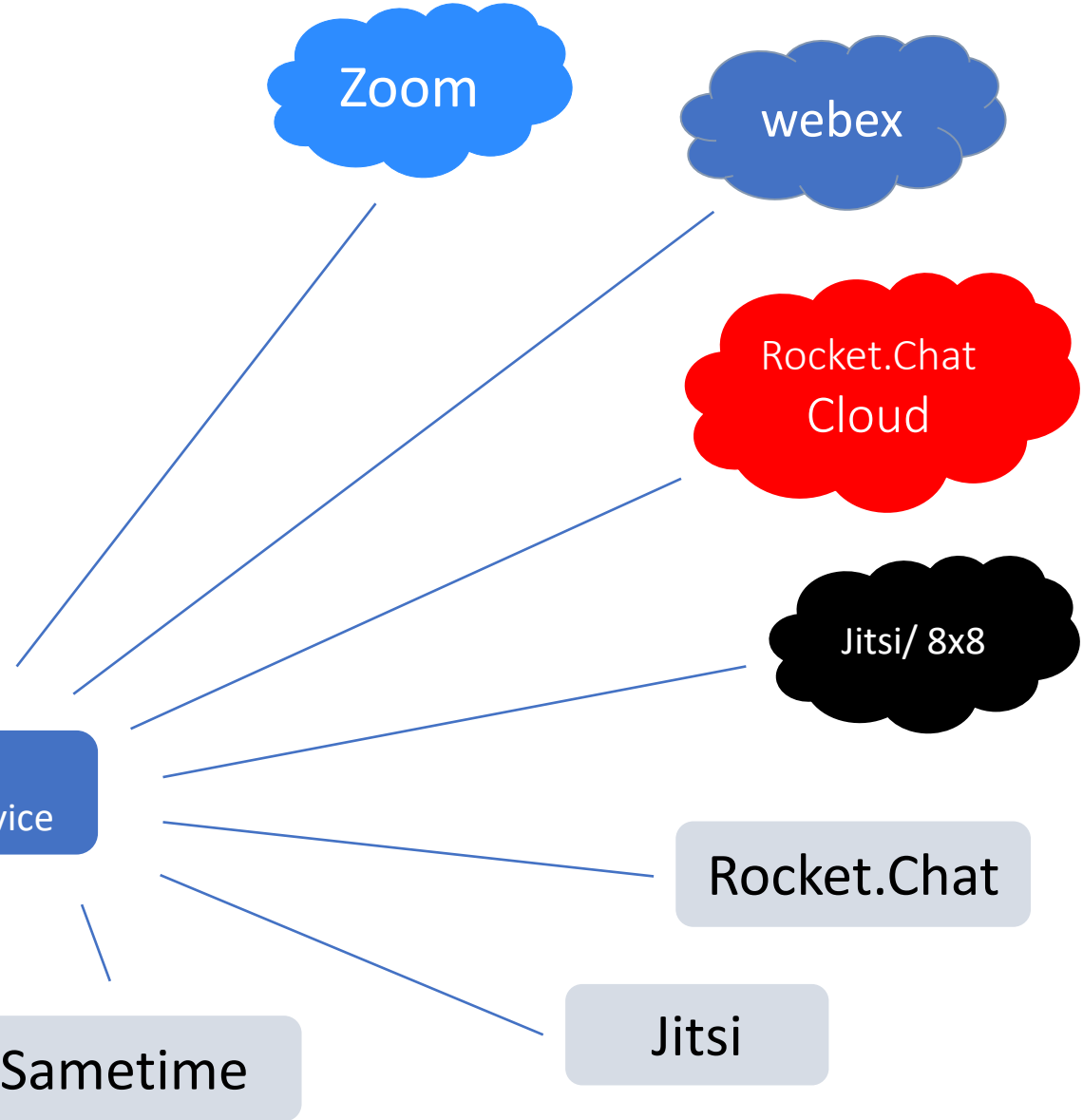
Rocket.Chat

Jitsi/ 8x8

Rocket.Chat
Cloud

webex

Zoom

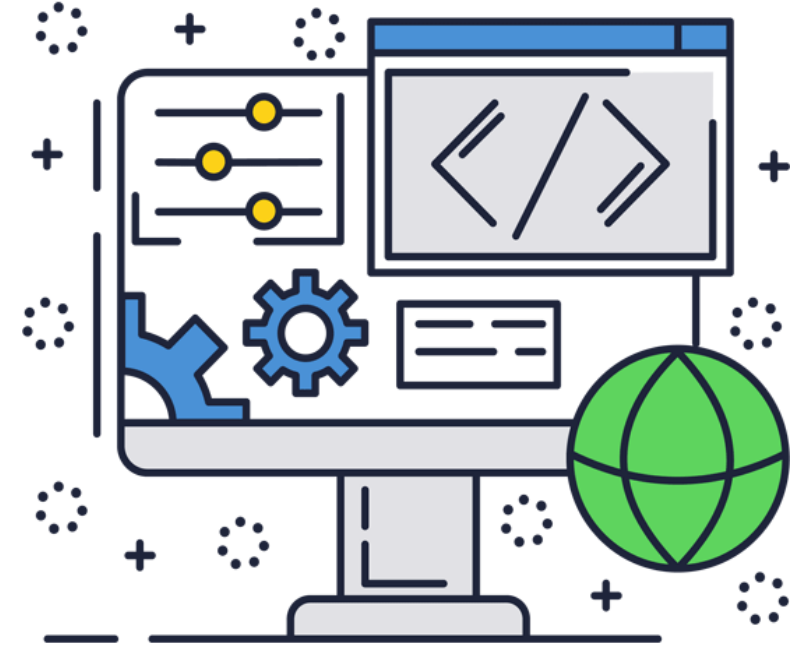


DEMO TIME

- Empowers users to get the information they need
- Collect data
- Automate processes



- Visually create your solution
- Extensible by developers
- Deploy within iPhora AppPlace
- Enterprise level security
- Utilize cloud-based and/or internal services



DEMO TIME

iPhora AppPlace

- Brings the benefit of cloud services within your private environment
- Empowers you to control your data
- Tailors your collaborative landscape to match your work

iPhora AppBuilder

- Allow users to accelerate their work

iPhora AppPlace and iPhora AppBuilder

- Domino 10.01 and higher
- Microsoft Windows / Linux / IBMi
- Cloud, private-cloud and on-premises delivery
- Per user per month pricing
- Multiple language support
- GDPR/privacy regulation compliant
- Currently used in many countries through the world

iPhora AppPlace

iPhora AppBuilder

iPhora Process Automation

<https://phoragroup.com>

Online trials coming soon

- Managing Director, Phora Group
- IBM Lifetime Champion
- HCL Lifetime Ambassador
- Working Domino and Notes since version 3
- Workflow and Process Automation
- UI Design
- Co-founder of MWLUG/CollabSphere Conference



<https://phoragroup.com>

Richard Moy
Managing Director
Phora Group

LinkedIn: taishanworks
Twitter: @richardmoy
Facebook: <https://www.facebook.com/richardqmoy/>

